




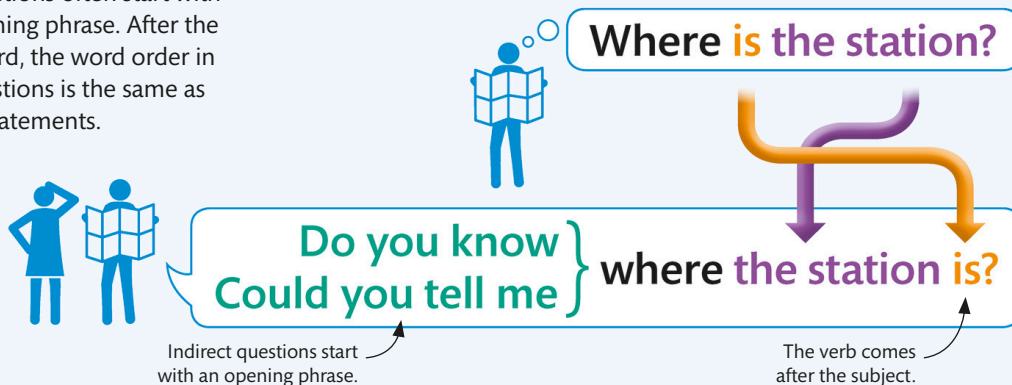
75 Polite questions

Indirect questions are more polite than direct questions. In spoken English, you might use them to ask people who you don't know very well about practical issues.

-  **New language** Indirect questions
-  **Vocabulary** Practical issues
-  **New skill** Asking polite questions

75.1 KEY LANGUAGE INDIRECT QUESTIONS

Indirect questions often start with a polite opening phrase. After the question word, the word order in indirect questions is the same as in positive statements.



75.2 FURTHER EXAMPLES INDIRECT QUESTIONS

Do you know how much **the tickets will cost**?

Could you tell me why **you were** late?

Like reported questions, indirect questions leave out the auxiliary verb "do."

Could you tell me what time **the stores close**?

75.3 HOW TO FORM INDIRECT QUESTIONS

OPENING PHRASE

QUESTION WORD

SUBJECT

VERB

Do you know

where

the station

is?

Could you tell me

Start with a polite opening phrase.

The verb doesn't change to the past tense for indirect questions.



75.4 REWRITE THE INDIRECT QUESTIONS, PUTTING THE WORDS IN THE CORRECT ORDER

can I luggage? know where Do my you collect

Do you know where I can collect my luggage?

1 the you what tell Could me meeting starts? time

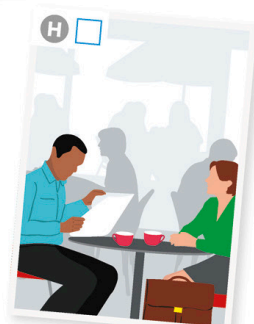
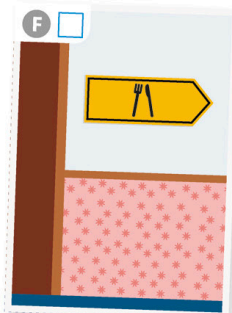
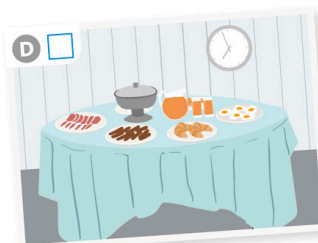
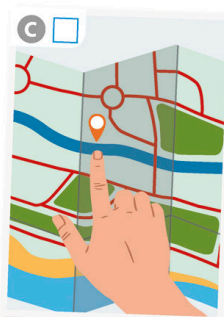
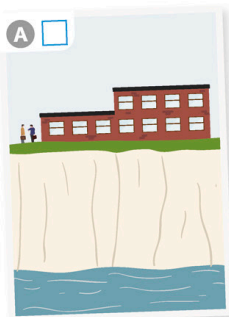
2 know bus Do when you leaves? next the

3 is? the how know Do long you movie

4 tell work? why you come me you Could to can't



75.5 LISTEN TO THE AUDIO, THEN NUMBER THE PICTURES IN THE ORDER THEY ARE DESCRIBED



75.6 KEY LANGUAGE INDIRECT SIMPLE QUESTIONS

Like reported simple questions, indirect simple questions use "if" and "whether."



Is it raining outside?

Do you know } { if } it is raining outside?
Could you tell me } { whether } it is raining outside?

Polite opening phrase

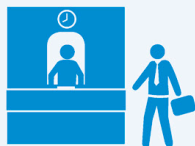
The subject comes before the verb.



75.7 FURTHER EXAMPLES INDIRECT SIMPLE QUESTIONS



Do you know if that restaurant is expensive?



Could you tell me whether the train's on time?



75.8 MARK THE INDIRECT QUESTIONS THAT ARE CORRECT

Do you know what time is it? ☐

Do you know what time it is? ☒

1 Could you tell me when the play starts? ☐

Could you tell me when starts the play? ☐

2 Do you know whether they arrived? ☐

Do you know whether they did arrive? ☐

3 Could you tell who is that lady? ☐

Could you tell me who that lady is? ☐

4 Do you know if Shona was at the party? ☐

Do you know was Shona at the party? ☐

5 Could you tell me what is your address? ☐

Could you tell me what your address is? ☐

6 Do you know where Brandon went? ☐

Do you know where did Brandon go? ☐

7 Could you tell me this table is reserved? ☐

Could you tell me if this table is reserved? ☐





75.9 FILL IN THE GAPS USING THE WORDS IN THE PANEL

Could you tell me if this seat is free?

- 1 Do you know _____ is delayed?
- 2 Could you tell me _____ costs?
- 3 Could you tell me _____ working in sales?
- 4 Do you know _____ leaves?
- 5 Could you tell me _____ is served?

when the last bus
how much this jacket
if this seat is
how long you've been
what time dinner
why the train



75.10 SAY THE SENTENCES OUT LOUD AS INDIRECT QUESTIONS

Does Sada have a driving license?

*Do you know if Sada has
a driving license?*



- 3 Will someone meet us at the station?



- 1 Is our plane going to be delayed?



- 4 How far is it to the hotel?



- 2 What time will your clients arrive?



- 5 Do the trains stop running after midnight?



75 CHECKLIST



Indirect questions ☐



Practical issues ☐



Asking polite questions ☐